

PVC Schedule 80

List Price Schedule PVC 80-326
Effective March 26, 2026
Supersedes Price Schedule PVC 80-324

Possession of this price list shall not be construed as an offer to sell the products listed.
Charlotte Pipe and "You can't beat the system" are registered trademarks of Charlotte Pipe and Foundry Company.
© 1998-2026 Charlotte Pipe and Foundry Company.



>> PVC Schedule 80 Fittings

ASTM D 1784
ASTM D 2464 & D 2467

| Size | Universal Part No. | UPC # 611942- | Carton Qty | List Price Each | Size | Universal Part No. | UPC # 611942- | Carton Qty | List Price Each |
|------|--------------------|---------------|------------|-----------------|------|--------------------|---------------|------------|-----------------|
|------|--------------------|---------------|------------|-----------------|------|--------------------|---------------|------------|-----------------|



Part No. PVC 8400 Tee
[SxSxS]

| | | | | |
|-------|---------|-------|----|-----------------|
| 1/2 | 801-005 | 05393 | 25 | \$25.00 |
| 3/4 | 801-007 | 05394 | 15 | 26.35 |
| 1 | 801-010 | 05395 | 15 | 32.95 |
| 1 1/4 | 801-012 | 05396 | 10 | 90.35 |
| 1 1/2 | 801-015 | 05397 | 10 | 90.35 |
| 2 | 801-020 | 05398 | 10 | 112.95 |
| 2 1/2 | 801-025 | 05399 | 10 | 122.85 |
| 3 | 801-030 | 05400 | 5 | 153.50 |
| 4 | 801-040 | 05401 | 5 | 178.80 |
| 6 | 801-060 | 07892 | 4 | 607.30 |
| 8 | 801-080 | 07553 | 2 | 1,408.45 |
| 10 | 801-100 | 14893 | - | * |
| 12 | 801-120 | 14894 | - | * |

* See Charlotte Pipe PVC 80 Large Diameter List Price Sheet

S = SOCKET

SPG = SPIGOT

MPT = MALE PIPE THREAD

FPT = FEMALE PIPE THREAD



Part No. PVC 8400 Reducing Tee
[SxSxS]

| | | | | |
|-----------------------|---------|-------|----|-----------------|
| 3/4 x 3/4 x 1/2 | 801-101 | 07882 | 15 | \$19.30 |
| 1 x 1 x 1/2 | 801-130 | 11424 | 15 | 27.75 |
| 1 x 1 x 3/4 | 801-131 | 07883 | 15 | 27.75 |
| 1 1/4 x 1 1/4 x 1 | 801-168 | 07884 | 15 | 60.25 |
| 1 1/2 x 1 1/2 x 3/4 | 801-210 | 11425 | 10 | 60.25 |
| 1 1/2 x 1 1/2 x 1 | 801-211 | 07885 | 10 | 60.25 |
| 1 1/2 x 1 1/2 x 1 1/4 | 801-212 | 07886 | 10 | 60.80 |
| 2 x 2 x 1/2 | 801-247 | 11426 | 10 | 76.35 |
| 2 x 2 x 3/4 | 801-248 | 11427 | 10 | 76.35 |
| 2 x 2 x 1 | 801-249 | 07887 | 10 | 76.35 |
| 2 x 2 x 1 1/2 | 801-251 | 07888 | 10 | 76.35 |
| 3 x 3 x 2 | 801-338 | 07889 | 5 | 140.05 |
| 4 x 4 x 2 | 801-420 | 10344 | 5 | 227.50 |
| 4 x 4 x 3 | 801-422 | 07890 | 5 | 226.30 |
| 6 x 6 x 2 | 801-528 | 10342 | 5 | 593.45 |
| 6 x 6 x 4 | 801-532 | 07891 | 4 | 607.30 |
| 8 x 8 x 6 | 801-585 | 09760 | 2 | 1,419.70 |



Part No. PVC 8401 Tee
[SxSxFPT]

| | | | | |
|-----|---------|-------|----|----------------|
| 1/2 | 802-005 | 09143 | 20 | \$39.65 |
| 3/4 | 802-007 | 09145 | 15 | 51.35 |
| 1 | 802-010 | 09146 | 15 | 60.05 |

You can't beat the system.®

| Size | Universal Part No. | UPC # 611942- | Carton Qty | List Price Each | Size | Universal Part No. | UPC # 611942- | Carton Qty | List Price Each |
|------|--------------------|---------------|------------|-----------------|------|--------------------|---------------|------------|-----------------|
|------|--------------------|---------------|------------|-----------------|------|--------------------|---------------|------------|-----------------|



Part No. PVC 8402
Tee
(FPT x FPT x FPT)

| | | | | |
|----|---------|-------|----|----------------|
| ½ | 805-005 | 07611 | 20 | \$29.00 |
| ¾ | 805-007 | 07612 | 15 | 32.30 |
| 1 | 805-010 | 07613 | 10 | 71.60 |
| 1¼ | 805-012 | 07614 | 10 | 76.15 |
| 1½ | 805-015 | 07615 | 10 | 91.55 |
| 2 | 805-020 | 07616 | 10 | 98.40 |
| 3 | 805-030 | 09746 | 5 | 377.15 |
| 4 | 805-040 | 09747 | 5 | 612.95 |



Part No. PVC 8300
90 Degree Elbow
(S x S)

| | | | | |
|----|---------|-------|----|---------------|
| ½ | 806-005 | 05375 | 25 | \$8.90 |
| ¾ | 806-007 | 05376 | 20 | 11.45 |
| 1 | 806-010 | 05377 | 10 | 18.40 |
| 1¼ | 806-012 | 05378 | 10 | 24.45 |
| 1½ | 806-015 | 05379 | 15 | 26.45 |
| 2 | 806-020 | 05380 | 15 | 31.95 |
| 2½ | 806-025 | 05381 | 5 | 74.60 |
| 3 | 806-030 | 05382 | 5 | 83.40 |
| 4 | 806-040 | 05383 | 4 | 126.95 |
| 6 | 806-060 | 07524 | 4 | 361.15 |
| 8 | 806-080 | 07873 | 2 | 995.35 |
| 10 | 806-100 | 14888 | - | * |
| 12 | 806-120 | 14889 | - | * |



Part No. PVC 8301
90 Degree Elbow
(S x FPT)

| | | | | |
|----|---------|-------|----|----------------|
| ½ | 807-005 | 09718 | 20 | \$34.95 |
| ¾ | 807-007 | 09719 | 20 | 41.10 |
| 1 | 807-010 | 09720 | 10 | 44.50 |
| 1¼ | 807-012 | 09721 | 10 | 51.65 |
| 1½ | 807-015 | 09732 | 10 | 61.25 |
| 2 | 807-020 | 09733 | 10 | 79.35 |



Part No. PVC 8302
90 Degree Elbow
(FPT x FPT)

| | | | | |
|----|---------|-------|----|----------------|
| ½ | 808-005 | 07596 | 20 | \$20.60 |
| ¾ | 808-007 | 07597 | 15 | 25.65 |
| 1 | 808-010 | 07598 | 10 | 32.30 |
| 1¼ | 808-012 | 07599 | 10 | 34.95 |
| 1½ | 808-015 | 07600 | 10 | 49.60 |
| 2 | 808-020 | 07601 | 10 | 55.55 |
| 3 | 808-030 | 09738 | 5 | 351.60 |
| 4 | 808-040 | 09739 | 5 | 618.55 |



Part No. PVC 8309
45 Degree Elbow
(S x S)

| | | | | |
|----|---------|-------|----|----------------|
| ½ | 817-005 | 05384 | 20 | \$16.75 |
| ¾ | 817-007 | 05385 | 25 | 25.55 |
| 1 | 817-010 | 05386 | 15 | 38.35 |
| 1¼ | 817-012 | 05387 | 10 | 48.80 |
| 1½ | 817-015 | 05388 | 10 | 57.75 |
| 2 | 817-020 | 05389 | 10 | 74.90 |
| 2½ | 817-025 | 05390 | 5 | 157.25 |
| 3 | 817-030 | 05391 | 5 | 191.40 |
| 4 | 817-040 | 05392 | 5 | 344.55 |
| 6 | 817-060 | 07876 | 5 | 434.00 |
| 8 | 817-080 | 07877 | 2 | 940.85 |
| 10 | 817-100 | 14891 | - | * |
| 12 | 817-120 | 14892 | - | * |

* See Charlotte Pipe PVC 80 Large Diameter List Price Sheet



| Size | Universal Part No. | UPC # 611942- | Carton Qty | List Price Each | Size | Universal Part No. | UPC # 611942- | Carton Qty | List Price Each |
|---|--------------------|---------------|------------|-----------------|---|--------------------|---------------|------------|-----------------|
|  <p>Part No. PVC 8312 45 Degree Elbow (FPT x FPT)</p> | | | | |  <p>Part No. PVC 8100 Reducer Coupling (S x S)</p> | | | | |
| ½ | 819-005 | 07605 | 20 | \$33.15 | ¾ x ½ | 829-101 | 05344 | 10 | \$19.70 |
| ¾ | 819-007 | 07606 | 10 | 35.80 | 1 x ½ | 829-130 | 05345 | 10 | 27.55 |
| 1 | 819-010 | 07607 | 10 | 44.85 | 1 x ¾ | 829-131 | 05346 | 10 | 28.65 |
| 1¼ | 819-012 | 07608 | 10 | 68.30 | 1¼ x 1 | 829-168 | 05347 | 10 | 58.30 |
| 1½ | 819-015 | 07609 | 10 | 86.15 | 1½ x 1 | 829-211 | 05348 | 10 | 61.05 |
| 2 | 819-020 | 07610 | 10 | 127.70 | 1½ x 1¼ | 829-212 | 05349 | 10 | 75.35 |
| 3 | 819-030 | 09749 | 5 | 406.45 | 2 x 1 | 829-249 | 05350 | 10 | 68.85 |
|  <p>Part No. PVC 8600 Wye (S x S x S)</p> | | | | |  <p>Part No. PVC 8102 Coupling (FPT x FPT)</p> | | | | |
| 1½† | 875-015 | 11433 | 20 | \$95.65 | ½ | 830-005 | 07587 | 25 | \$17.95 |
| 2† | 875-020 | 11434 | 10 | 274.55 | ¾ | 830-007 | 07588 | 25 | 25.65 |
| 3† | 875-030 | 11435 | 5 | 875.60 | 1 | 830-010 | 07589 | 15 | 27.55 |
| 4§ | 875-040 | 11436 | 4 | 1,084.95 | 1¼ | 830-012 | 07590 | 10 | 34.05 |
| 6§ | 875-060 | 11437 | 3 | 1,481.80 | 1½ | 830-015 | 07591 | 10 | 75.80 |
| <p>† Maximum pressure rating 250 psi at 73°F § Maximum pressure rating 150 psi at 73°F</p> | | | | |  <p>Part No. PVC 8100 Coupling (S x S)</p> | | | | |
| ½ | 829-005 | 05335 | 25 | \$16.10 | 2 | 830-020 | 07592 | 10 | 79.65 |
| ¾ | 829-007 | 05336 | 25 | 21.80 | 3 | 830-030 | 09755 | 5 | 224.75 |
| 1 | 829-010 | 05337 | 20 | 22.50 | 4 | 830-040 | 09756 | 5 | 389.15 |
| 1¼ | 829-012 | 05338 | 10 | 34.05 | | | | | |
| 1½ | 829-015 | 05339 | 10 | 36.80 | | | | | |
| 2 | 829-020 | 05340 | 10 | 39.65 | | | | | |
| 2½ | 829-025 | 05341 | 5 | 97.20 | | | | | |
| 3 | 829-030 | 05342 | 5 | 111.60 | | | | | |
| 4 | 829-040 | 05343 | 5 | 139.70 | | | | | |
| 6 | 829-060 | 07495 | 4 | 300.80 | | | | | |
| 8 | 829-080 | 07496 | 2 | 409.30 | | | | | |
| 10 | 829-100 | 14883 | - | * | | | | | |
| 12 | 829-120 | 14884 | - | * | | | | | |

* See Charlotte Pipe PVC 80 Large Diameter List Price Sheet

| Size | Universal Part No. | UPC # 611942- | Carton Qty | List Price Each | Size | Universal Part No. | UPC # 611942- | Carton Qty | List Price Each |
|------|--------------------|---------------|------------|-----------------|------|--------------------|---------------|------------|-----------------|
|------|--------------------|---------------|------------|-----------------|------|--------------------|---------------|------------|-----------------|



**Part No. PVC 8101
Female Adapter
(S x FPT)**

| | | | | |
|----|---------|-------|----|----------------|
| ½ | 835-005 | 07498 | 25 | \$15.10 |
| ¾ | 835-007 | 07499 | 15 | 22.35 |
| 1 | 835-010 | 07500 | 15 | 32.95 |
| 1¼ | 835-012 | 07501 | 10 | 53.45 |
| 1½ | 835-015 | 07502 | 10 | 65.55 |
| 2 | 835-020 | 07503 | 10 | 114.35 |
| 2½ | 835-025 | 07504 | 5 | 180.50 |
| 3 | 835-030 | 07505 | 5 | 203.15 |
| 4 | 835-040 | 07506 | 5 | 349.25 |



**Part No. PVC 8109
Male Adapter
(S x MPT)**

| | | | | |
|----|---------|-------|----|----------------|
| ½ | 836-005 | 07808 | 25 | \$18.85 |
| ¾ | 836-007 | 07812 | 25 | 20.80 |
| 1 | 836-010 | 07814 | 10 | 36.05 |
| 1¼ | 836-012 | 07816 | 10 | 42.00 |
| 1½ | 836-015 | 07818 | 10 | 60.25 |
| 2 | 836-020 | 07819 | 10 | 87.70 |
| 2½ | 836-025 | 07821 | 5 | 99.15 |
| 3 | 836-030 | 07823 | 5 | 110.05 |
| 4 | 836-040 | 07827 | 5 | 195.80 |



**Part No. PVC 8107
Reducer Bushing (Flush Style)
(SPG x S)**

| | | | | |
|---------|---------|-------|----|---------------|
| ¾ x ½ | 837-101 | 05355 | 50 | \$5.20 |
| 1 x ½ | 837-130 | 07593 | 50 | 14.85 |
| 1 x ¾ | 837-131 | 05357 | 50 | 14.85 |
| 1¼ x ½ | 837-166 | 10348 | 25 | 23.25 |
| 1¼ x ¾ | 837-167 | 10347 | 25 | 23.25 |
| 1¼ x 1 | 837-168 | 05358 | 25 | 23.25 |
| 1½ x ½ | 837-209 | 07594 | 20 | 31.75 |
| 1½ x ¾ | 837-210 | 07595 | 20 | 31.75 |
| 1½ x 1 | 837-211 | 05359 | 20 | 31.75 |
| 1½ x 1¼ | 837-212 | 05360 | 25 | 31.75 |
| 2 x ½ | 837-247 | 10346 | 10 | 45.30 |
| 2 x ¾ | 837-248 | 10345 | 10 | 45.30 |
| 2 x 1 | 837-249 | 07755 | 10 | 45.30 |
| 2 x 1¼ | 837-250 | 07760 | 10 | 45.30 |
| 2 x 1½ | 837-251 | 05362 | 10 | 45.30 |
| 2½ x 1 | 837-289 | 11411 | 10 | 105.10 |
| 2½ x 1¼ | 837-290 | 11412 | 10 | 79.20 |
| 2½ x 1½ | 837-291 | 07762 | 10 | 78.55 |
| 2½ x 2 | 837-292 | 07765 | 10 | 78.55 |
| 3 x 1 | 837-335 | 11413 | 10 | 125.60 |
| 3 x 1¼ | 837-336 | 11414 | 10 | 125.60 |
| 3 x 1½ | 837-337 | 07793 | 10 | 124.60 |
| 3 x 2 | 837-338 | 05363 | 10 | 124.60 |
| 3 x 2½ | 837-339 | 09534 | 10 | 124.60 |
| 4 x 2 | 837-420 | 08374 | 10 | 172.55 |
| 4 x 3 | 837-422 | 05365 | 10 | 172.55 |
| 6 x 3 | 837-530 | 07794 | 5 | 239.85 |
| 6 x 4 | 837-532 | 07795 | 5 | 239.85 |
| 8 x 6 | 837-585 | 09272 | 4 | 583.75 |
| 10 x 8 | 837-628 | 14885 | - | * |
| 12 x 10 | 837-670 | 14887 | - | * |

* See Charlotte Pipe PVC 80 Large Diameter List Price Sheet

| Size | Universal Part No. | UPC # 611942- | Carton Qty | List Price Each | Size | Universal Part No. | UPC # 611942- | Carton Qty | List Price Each |
|------|--------------------|---------------|------------|-----------------|------|--------------------|---------------|------------|-----------------|
|------|--------------------|---------------|------------|-----------------|------|--------------------|---------------|------------|-----------------|



Part No. PVC 8108
Reducer Bushing (Flush Style)
(SPG x FPT)

| | | | | |
|---------------|---------|-------|----|---------------|
| 3/4 x 1/2 | 838-101 | 07391 | 50 | \$9.35 |
| 1 x 1/2 | 838-130 | 07796 | 40 | 14.85 |
| 1 x 3/4 | 838-131 | 07392 | 40 | 14.85 |
| 1 1/4 x 3/4 | 838-167 | 11415 | 25 | 30.20 |
| 1 1/4 x 1 | 838-168 | 07507 | 25 | 30.20 |
| 1 1/2 x 1/2 | 838-209 | 11416 | 25 | 37.80 |
| 1 1/2 x 3/4 | 838-210 | 07797 | 25 | 37.80 |
| 1 1/2 x 1 | 838-211 | 07508 | 15 | 37.80 |
| 1 1/2 x 1 1/4 | 838-212 | 07509 | 15 | 37.80 |
| 2 x 1/2 | 838-247 | 11417 | 25 | 46.60 |
| 2 x 3/4 | 838-248 | 07798 | 10 | 46.15 |
| 2 x 1 | 838-249 | 07510 | 10 | 46.15 |
| 2 x 1 1/4 | 838-250 | 07511 | 10 | 46.15 |
| 2 x 1 1/2 | 838-251 | 07512 | 10 | 46.15 |
| 2 1/2 x 2 | 838-292 | 07514 | 10 | 98.60 |
| 3 x 2 | 838-338 | 07515 | 5 | 181.15 |
| 3 x 2 1/2 | 838-339 | 09512 | 10 | 182.70 |
| 4 x 2 | 838-420 | 11418 | 6 | 280.50 |
| 4 x 3 | 838-422 | 07799 | 6 | 278.30 |



Part No. PVC 8200
Reducer Bushing (Flush Style)
(MPT x FPT)

| | | | | |
|---------------|---------|-------|----|----------------|
| 3/4 x 1/2 | 839-101 | 07831 | 50 | \$19.95 |
| 1 x 1/2 | 839-130 | 07845 | 50 | 31.20 |
| 1 x 3/4 | 839-131 | 07850 | 50 | 31.20 |
| 1 1/4 x 3/4 | 839-167 | 11419 | 50 | 33.05 |
| 1 1/4 x 1 | 839-168 | 07852 | 25 | 33.05 |
| 1 1/2 x 1/2 | 839-209 | 11420 | 25 | 39.55 |
| 1 1/2 x 3/4 | 839-210 | 07949 | 25 | 39.20 |
| 1 1/2 x 1 | 839-211 | 07854 | 20 | 39.20 |
| 1 1/2 x 1 1/4 | 839-212 | 07857 | 20 | 39.20 |
| 2 x 1/2 | 839-247 | 11421 | 25 | 57.40 |
| 2 x 3/4 | 839-248 | 07950 | 25 | 57.40 |
| 2 x 1 | 839-249 | 07861 | 10 | 57.40 |
| 2 x 1 1/4 | 839-250 | 11422 | 10 | 57.40 |
| 2 x 1 1/2 | 839-251 | 07863 | 10 | 57.40 |
| 2 1/2 x 2 | 839-292 | 07866 | 10 | 77.80 |
| 3 x 2 | 839-338 | 07871 | 10 | 105.75 |
| 4 x 2 | 839-420 | 11423 | 10 | 217.95 |



Part No. PVC 8116
Cap
(SOCKET)

| | | | | |
|-------|---------|-------|----|----------------|
| 1/2 | 847-005 | 05366 | 25 | \$15.75 |
| 3/4 | 847-007 | 05367 | 25 | 16.65 |
| 1 | 847-010 | 05368 | 25 | 29.55 |
| 1 1/4 | 847-012 | 05369 | 10 | 35.60 |
| 1 1/2 | 847-015 | 05370 | 10 | 35.60 |
| 2 | 847-020 | 05371 | 10 | 70.30 |
| 2 1/2 | 847-025 | 05372 | 5 | 143.45 |
| 3 | 847-030 | 05373 | 5 | 167.80 |
| 4 | 847-040 | 05374 | 5 | 283.05 |
| 6 | 847-060 | 07516 | 4 | 704.15 |
| 8 | 847-080 | 07517 | 3 | 904.15 |

! WARNING

Testing with or use of compressed air or gas in ABS / CPVC / PVC pipe or fittings can result in explosive failures and cause severe injury or death.

AIR/GAS



- NEVER test with or transport/store compressed air or gas in ABS / CPVC / PVC pipe or fittings.
- NEVER test ABS / CPVC / PVC pipe or fittings with compressed air or gas, or air over water boosters.
- ONLY use ABS / CPVC / PVC pipe or fittings for water or approved chemicals.
- Refer to warnings on PFFA's website and ASTM D 1785.

| Size | Universal Part No. | UPC # 611942- | Carton Qty | List Price Each | Size | Universal Part No. | UPC # 611942- | Carton Qty | List Price Each |
|------|--------------------|---------------|------------|-----------------|------|--------------------|---------------|------------|-----------------|
|------|--------------------|---------------|------------|-----------------|------|--------------------|---------------|------------|-----------------|



**Part No. PVC 8117
Cap
(FPT)**

| | | | | |
|----|---------|-------|----|----------------|
| ½ | 848-005 | 07518 | 25 | \$19.70 |
| ¾ | 848-007 | 07519 | 25 | 22.05 |
| 1 | 848-010 | 07520 | 15 | 27.75 |
| 1¼ | 848-012 | 07521 | 10 | 33.05 |
| 1½ | 848-015 | 07522 | 10 | 37.80 |
| 2 | 848-020 | 07523 | 10 | 74.25 |
| 3 | 848-030 | 09694 | 5 | 176.20 |
| 4 | 848-040 | 09692 | 5 | 310.25 |



**Part No. PVC 8113
Plug
(MPT)**

| | | | | |
|----|---------|-------|----|----------------|
| ½ | 850-005 | 09312 | 25 | \$15.20 |
| ¾ | 850-007 | 09313 | 25 | 15.75 |
| 1 | 850-010 | 09314 | 15 | 19.30 |
| 1¼ | 850-012 | 09315 | 10 | 28.45 |
| 1½ | 850-015 | 09316 | 10 | 34.60 |
| 2 | 850-020 | 09317 | 10 | 35.50 |



**Part No. PVC 8500
Flange (One Piece)**
(SOCKET)**

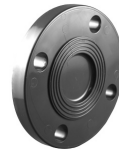
| | | | | |
|----|---------|-------|----|----------------|
| ½ | 851-005 | 09332 | 25 | \$49.05 |
| ¾ | 851-007 | 09333 | 25 | 52.45 |
| 1 | 851-010 | 09334 | 15 | 57.95 |
| 1¼ | 851-012 | 09335 | 15 | 60.15 |

** See Charlotte Pipe® Plastics Technical Manual for pressure rating.



**Part No. PVC 8560
Flange (One Piece)**
(FPT)**

| | | | | |
|----|---------|-------|----|----------------|
| ½ | 852-005 | 09340 | 25 | \$58.75 |
| ¾ | 852-007 | 09341 | 25 | 68.85 |
| 1 | 852-010 | 09342 | 15 | 74.80 |
| 1¼ | 852-012 | 09343 | 15 | 104.00 |
| 1½ | 852-015 | 09344 | 15 | 113.50 |
| 2 | 852-020 | 09345 | 10 | 115.15 |



Part No. PVC 8510
Blind Flange**

| | | | | |
|---|---------|-------|----|-----------------|
| 2 | 853-020 | 11428 | 10 | \$203.85 |
| 3 | 853-030 | 11429 | 5 | 400.75 |
| 4 | 853-040 | 11430 | 5 | 499.10 |
| 6 | 853-060 | 11431 | 5 | 606.55 |
| 8 | 853-080 | 11432 | 5 | 759.25 |



**Part No. PVC 8530
Van Stone Flange**
(SOCKET)**

| | | | | |
|----|---------|-------|----|----------------|
| 1½ | 854-015 | 07393 | 20 | \$60.95 |
| 2 | 854-020 | 07525 | 10 | 81.10 |
| 2½ | 854-025 | 07526 | 10 | 125.30 |
| 3 | 854-030 | 07527 | 10 | 138.50 |
| 4 | 854-040 | 07528 | 5 | 176.05 |
| 6 | 854-060 | 07529 | 5 | 275.45 |
| 8 | 854-080 | 07530 | 2 | 450.95 |
| 10 | 854-100 | 09352 | 2 | * |
| 12 | 854-120 | 09353 | 2 | * |

* See Charlotte Pipe PVC 80 Large Diameter List Price Sheet

** See Charlotte Pipe® Plastics Technical Manual for pressure rating.

| Size | Universal Part No. | UPC # 611942- | Carton Qty | List Price Each | Size | Universal Part No. | UPC # 611942- | Carton Qty | List Price Each |
|------|--------------------|---------------|------------|-----------------|------|--------------------|---------------|------------|-----------------|
|------|--------------------|---------------|------------|-----------------|------|--------------------|---------------|------------|-----------------|



Part No. PVC 8700
Union With Viton® O-Ring Seal
(SxS)**

| | | | | |
|----|---------|-------|----|----------------|
| ½ | 857-005 | 09152 | 10 | \$33.15 |
| ¾ | 857-007 | 09153 | 10 | 42.00 |
| 1 | 857-010 | 09154 | 10 | 47.80 |
| 1¼ | 857-012 | 09155 | 5 | 95.10 |
| 1½ | 857-015 | 09156 | 5 | 107.65 |
| 2 | 857-020 | 09157 | 5 | 145.90 |
| 3 | 857-030 | 09158 | 5 | 271.60 |



Part No. PVC 8800
Union With Viton® O-Ring Seal
(FPT x FPT)**

| | | | | |
|----|---------|-------|----|----------------|
| ½ | 858-005 | 09172 | 10 | \$38.45 |
| ¾ | 858-007 | 09173 | 10 | 53.90 |
| 1 | 858-010 | 09174 | 10 | 71.30 |
| 1¼ | 858-012 | 09175 | 5 | 136.75 |
| 1½ | 858-015 | 09176 | 5 | 169.70 |
| 2 | 858-020 | 09177 | 5 | 261.15 |
| 3 | 858-030 | 09178 | 5 | 660.65 |



Part No. PVC 8820
Union With Viton® O-Ring Seal
(Sx FPT)**

| | | | | |
|----|---------|-------|----|----------------|
| ½ | 859-005 | 11456 | 10 | \$40.45 |
| ¾ | 859-007 | 11457 | 10 | 56.50 |
| 1 | 859-010 | 11458 | 10 | 75.35 |
| 1½ | 859-015 | 11460 | 5 | 177.60 |
| 2 | 859-020 | 11461 | 5 | 273.45 |



Part No. PVC 8710
Union With EPDM O-Ring Seal
(SxS)**

| | | | | |
|----|---------|-------|----|----------------|
| ½ | 897-005 | 09224 | 10 | \$32.70 |
| ¾ | 897-007 | 09225 | 10 | 41.45 |
| 1 | 897-010 | 09226 | 10 | 47.40 |
| 1¼ | 897-012 | 09227 | 5 | 93.85 |
| 1½ | 897-015 | 09228 | 5 | 106.20 |
| 2 | 897-020 | 09229 | 5 | 144.25 |
| 3 | 897-030 | 09230 | 5 | 268.30 |



Part No. PVC 8810
Union With EPDM O-Ring Seal
(FPT x FPT)**

| | | | | |
|----|---------|-------|----|----------------|
| ½ | 898-005 | 09238 | 10 | \$38.00 |
| ¾ | 898-007 | 09239 | 10 | 52.90 |
| 1 | 898-010 | 09240 | 10 | 70.40 |
| 1¼ | 898-012 | 09241 | 5 | 134.30 |
| 1½ | 898-015 | 09242 | 5 | 166.25 |
| 2 | 898-020 | 09243 | 5 | 255.85 |
| 3 | 898-030 | 09244 | 5 | 654.15 |



Part No. PVC 8830
Union With EPDM O-Ring Seal
(Sx FPT)**

| | | | | |
|----|---------|-------|----|----------------|
| ½ | 899-005 | 11469 | 10 | \$39.90 |
| ¾ | 899-007 | 11463 | 10 | 55.75 |
| 1 | 899-010 | 11464 | 10 | 74.15 |
| 1¼ | 899-012 | 11465 | 5 | 141.80 |
| 1½ | 899-015 | 11466 | 5 | 175.50 |
| 2 | 899-020 | 11467 | 5 | 270.80 |

** See Charlotte Pipe® Plastics Technical Manual for pressure rating.

STANDARDS AND SPECIFICATIONS

NSF STANDARD 14

NSF STANDARD 61

ASTM D 1784 - PVC MATERIAL

ASTM D 2467 - PVC SCHEDULE 80 SOCKET FITTINGS

ASTM D 2464 or D 2467 - PVC SCHEDULE 80 THREADED FITTINGS

ASTM F 1970 - UNIONS AND FLANGES

ANSI B16.5 - FLANGE BOLT HOLE PATTERNS

RECOMMENDATIONS FOR INSTALLERS:

Plastic piping systems should be engineered and installed in accordance with established standards and procedures. Suitability for the intended service application should be determined prior to installation.

SOLVENT WELD CONNECTIONS

Use a quality grade of primer and solvent cement formulated for the type of connection, with the correct size applicator. Read and follow all of the solvent cement manufacturer's application instructions.

THREADED CONNECTIONS

Use a quality grade of Teflon® tape. The use of Teflon® paste, pipe joint compounds, or other thread lubricants is not recommended as they may contain substances that are harmful to plastics.

1 to 1½ turns beyond finger tight is generally all that is required to make a sound plastic threaded connection. Unnecessary over-tightening will cause damage to both pipe and fitting.

Note: Refer to Charlotte Pipe and Foundry Company's Plastics Technical Manual for complete installation instructions.

TERMS AND CONDITIONS OF SALE

Terms and Conditions of Sale can be found at https://charlottepipe.com/terms_and_conditions.aspx

LIMITED WARRANTY

Charlotte Pipe and Foundry Company® (Charlotte Pipe®) Products are warranted to be free from manufacturing defects and to conform to currently applicable ASTM standards for a period of five (5) years from date of delivery. Buyer's remedy for breach of this warranty is limited to replacement of, or credit for, the defective product. This warranty excludes any expense for removal or reinstallation of any product and any other incidental, consequential, or punitive damages. **This limited warranty is the only warranty made by seller and is expressly in lieu of all other warranties, express and implied, including any warranties of merchantability and fitness for a particular purpose.** No statement, conduct or description by Charlotte Pipe or its representative, in addition to or beyond this Limited Warranty, shall constitute a warranty. This Limited Warranty may only be modified in writing signed by an officer of Charlotte Pipe.

This Limited Warranty will not apply if:

- 1) The Products are used for purposes other than their intended purpose as defined by local plumbing and building codes, and the applicable ASTM standard.
- 2) The Products are not installed in good and workmanlike manner consistent with normal industry standards; installed in compliance with the latest instructions published by Charlotte Pipe and good plumbing practices; and installed in conformance with all applicable plumbing, fire and building code requirements.
- 3) This limited warranty does not apply when the products of Charlotte Pipe are used with the products of other manufacturers that do not meet the applicable ASTM or CISPI standards or that are not marked in a manner to indicate the entity that manufactured them.
- 4) In hubless cast iron installations, this warranty will not apply if products are joined with unshielded hubless couplings. Charlotte Pipe requires that its hubless cast iron pipe and fittings be joined only with shielded hubless couplings manufactured in accordance with CISPI 310, ASTM C 1277 and certified by NSF® International or with Heavy Duty Couplings meeting ASTM C 1540.
- 5) The Products fail due to defects or deficiencies in design, engineering, or installation of the piping system of which they are a part.
- 6) The Products have been the subject of modification; misuse; misapplication; improper maintenance or repair; damage caused by the fault or negligence of anyone other than Charlotte Pipe; or any other act or event beyond the control of Charlotte Pipe.
- 7) The Products fail due to the freezing of water in the Products.
- 8) The Products fail due to contact with chemical agents, fire stopping materials, thread sealant, plasticized vinyl products, or other aggressive chemical agents that are not compatible.
- 9) Pipe outlets, sound attenuation systems or other devices are permanently attached to the surface of Charlotte® PVC, ABS or CPVC products with solvent cement or adhesive glue.

Charlotte Pipe products are manufactured to the applicable ASTM or CISPI standard. Charlotte Pipe and Foundry **cannot** accept responsibility for the performance, dimensional accuracy, or compatibility of pipe, fittings, gaskets, or couplings not manufactured or sold by Charlotte Pipe and Foundry.

This Limited Warranty will not apply unless written notice of a claim is mailed to Charlotte Pipe at the address below within 30 days of discovery of the allegedly defective product.

Any Charlotte Pipe products alleged to be defective **must** be made available to Charlotte Pipe at the following address for verification, inspection and determination of cause:

Charlotte Pipe and Foundry Company
Attention: Technical Services
2109 Randolph Road
Charlotte, North Carolina 28207

Purchaser must obtain a return materials authorization and instructions for return shipment to Charlotte Pipe of any product claimed defective or shipped in error.

Any Charlotte Pipe product **proved** to be defective in manufacture will be replaced F.O.B. point of original delivery, or credit will be issued, at the discretion of Charlotte Pipe.

5/19/23

Charlotte, Charlotte Pipe and "You can't beat the system" are registered trademarks of Charlotte Pipe and Foundry Company.

PO BOX 35430 CHARLOTTE, NORTH CAROLINA 28235
SALES PHONE (704) 348 6450 (800) 572 4199
TECHNICAL PHONE (800) 438 6091 FAX (800) 553 1605
WWW.CHARLOTTEPIPE.COM

CHARLOTTE

PIPE AND FOUNDRY COMPANY®

PO BOX 35430

CHARLOTTE

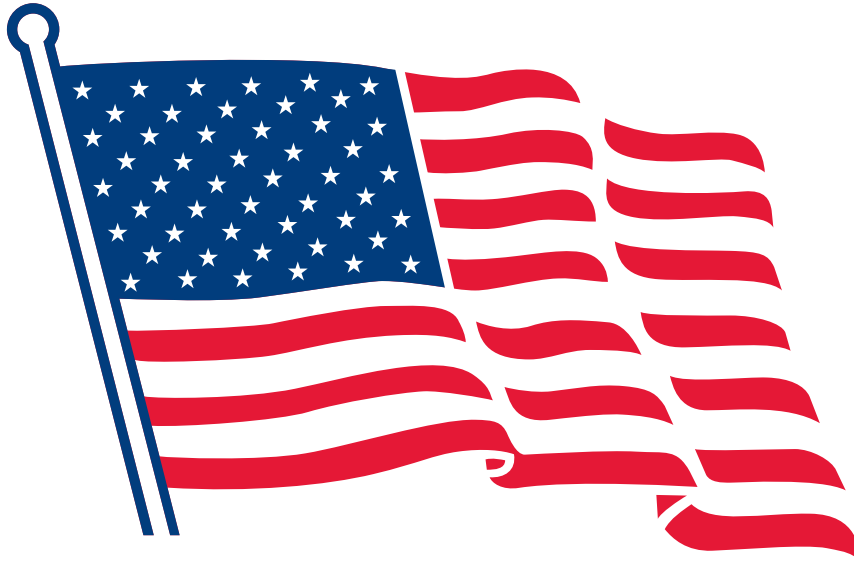
NORTH CAROLINA 28235

PHONE (704) 348-6450

(800) 438-6091

FAX (800) 553-1605

WWW.CHARLOTTEPIPE.COM



All products manufactured by
Charlotte Pipe and Foundry Company
are proudly made in the U.S.A.

